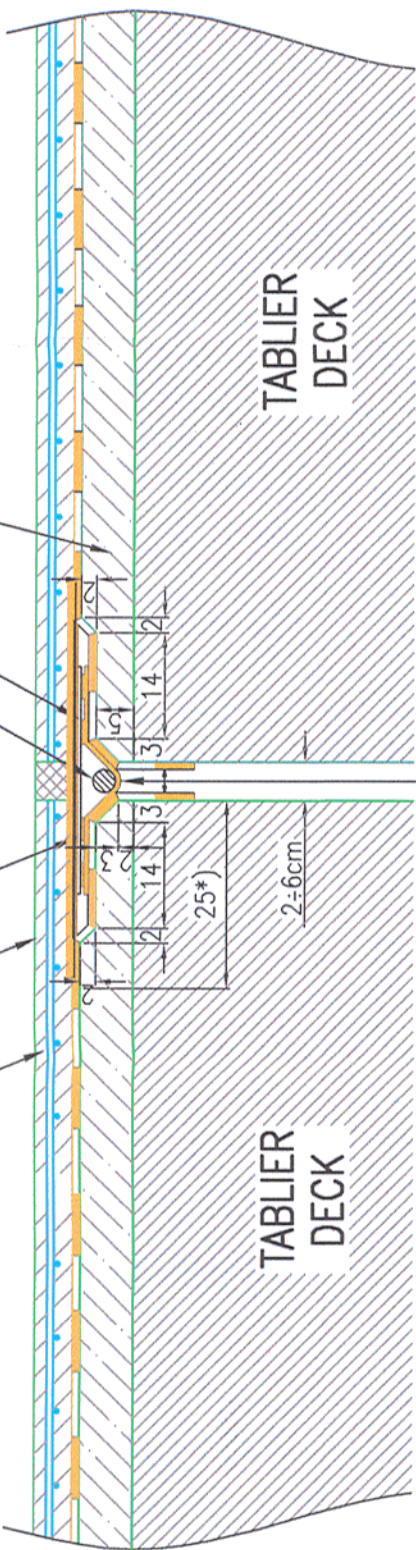


ROST DE DILATATIE DALA DE BETON EXPANSION JOINT FOR CONCRETE SLAB SC. 1:10

Intre suprafata tolei si hidroizolatie se interpune o foaie de hartie Kraft
Interposing one Kraft paper between the metallic sheet surface and waterproofing

Sapa de protectie din beton armat
Protection blanket out of reinforced concrete

Plasa sudata $\phi 6-100 \times 100$ mm
Wiremesh $\phi 6-100 \times 100$ mm



OBSERVATIE:

- *) pe aceasta lungime sapa de protectie se toarna dupa realizarea acoperirii de rost.
ATTENTION:
- *) on this length the protection blanket is casting after joint cover execution.

MEMBRANA PENTRU HIDROIZOLATII

- Conditii de utilizare:
- grosimea minima a membranei 4mm;
 - realizata pe baza de bitum aditivat;
 - sa prezinte strat din granule minerale care sa asigure aderența betonului de protectie;
 - sa se aplice cu flacara in aderența totala la suport.

Caracteristici fizico-mecanice:

- rezistența la traciune - longitudinal min. 1100N/5cm;
- rezistența la traciune - transversal min. 900N/5cm;
- alungire la rupere - longitudinal min. 55%;
- alungire la rupere - transversal min. 55%;
- rezistența la poansonare statica - > 20kg(L4);
- flexibilitate la temperaturi scazute (dorn cu diametrul 20mm) - fara fisuri la -20°C;
- aderența la suport - min. 0.53 MPa.

WATERPROOFING MEMBRANE

- Using conditions:
- the minimum membrane thickness 4mm;
 - additive bitumen membrane;
 - it shall have a layer with mineral granule which should provide the protection concrete adherence;
 - it shall be applied by flame gluing in total adherence with the support.

Physical-mechanical properties:

- tensile strength - longitudinal min. 1100N/5cm;
- tensile strength - transversal min. 900N/5cm;
- elongation ultimate - longitudinal min. 55%;
- elongation ultimate - transversal min. 55%;
- static punching resistance - > 20kg(L4);
- low temperature flexibility (mandrel with 20mm diameter) - without cracks at -20°C;
- support adherence - min. 0.53 MPa.

ACOPERIRE DE ROST

Materialul din care este facuta membrana de acoperire a rostului va fi compatibil cu sistemul de hidroizolatie ales si va fi etansa, nepermitând scurgeri ale apei în rost.

Caracteristicile materialelor utilizate sunt:

- Banda de rost:
 - Alungire la rupere: > 350 %
 - Impermeabilitate la apa 10bar
 - Mentine caracteristicile fara modificari de la -35° la +80° C
- Cordoan de rost:
 - Alungire la rupere: > 200%
 - Flexibilitate la rece fara fisuri la -20°C
- Tola metalica S235J0, grosime 5mm, latime 300mm

JOINT COVER

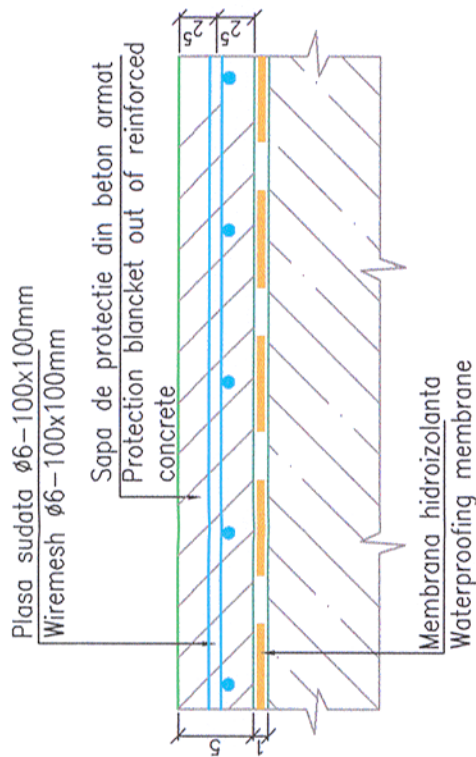
The material forming the joint cover membrane will be compatible to the selected waterproofing system and will be tight so as not to allow any water leakage inside the joint.

The characteristics of the materials used are:

- Joint band:
 - Elongation: > 350 %
 - Water proofing: 10bar
 - Maintains the characteristics with no modifications from -35° to +80° C
- Joint cord:
 - Elongation at break: > 200%
 - Flexibility at cold with not cracks at -20°C
- Metallic roll 0L37-2n, thickness 5mm, width 300mm

HIDROIZOLATIE SI SAPA DE PROTECTIE WATERPROOFING AND PROTECTION BLANKET

Sc.1:5



LEGENDA BETOANELOR/CONCRETE LEGEND conform NE 012-1:2007/SR EN 206-1

- BETON C30/37 - Clasa de expunere XC3+XF1, agregate D_{max} 22 DALA DE BETON/CONCRETE SLAB
- BETON C25/30 - Clasa de expunere XC4+XF1+XM1, agregate D_{max} 16. SAPA DE PROTECTIE A HIDROIZOLATIEI SI PREDALE WATERPROOFING PROTECTION AND PRESLABS
- BETON C16/20 - Clasa de expunere X0+XF3, agregate D_{max} 16. DREN, BETON DE PANTA, DE EGALIZARE DRAINAGE, SLOPE, LEAN CONCRETE

Prezentul plan anuleaza si inlocuieste versiunea anterioara
This plan cancels and replaces previous version



Verificator / Expert Checker / Expert		Cerinta Requirement		Semnatura Signature	
European Investment Bank		MINISTERUL TRANSPORTURILOR BENEFICIAR / BENEFICIARY : COMPANIA NAȚIONALĂ DE CĂI FERATE "CFR" SA		Semnatura Signature	
PROIECTANT / DESIGNER:					
		C. Teodorescu		Data Date	
Aprobat Approved		Sef de echipa Team leader		01.2013	
Verificat Checked		Expert Cheie Key Expert		01.2013	
Subcontractant / Subcontractor					
Aprobat Approved		Adjunct Sef de echipa Deputy Team leader		01.2013	
Proiectat Designed		Inginer Engineer		01.2013	
"Reabilitarea liniei c.f. Frontiera - Curtici - Simeria, parte componentă a coridorului IV Pan - European pentru circulația trenurilor cu viteză maximă de 160 km/h" Tronsoanel 2-C : cap Y Iltou - cap Y Gurasada "Rehabilitation of the Railway Line Border - Curtici - Simeria, component Part of the IV Pan - European Corridor for the Trains Circulation with maximum speed of 160 km/h" Section 2-C : end Y Iltou - end Y Gurasada				Project 9i 35311.1	
Denumire desen / Drawing name: HIDROIZOLATIE SI ROST DE DILATATIE DALA DE BETON WATERPROOFING AND EXPANSION JOINT FOR CONCRETE SLAB					
Scara / Scale 1:10		Revizia / Revision 1 / 04.2013		Cod desen / Drawing Code PT.02.02.00.PO.19	
				Nr / No 19	